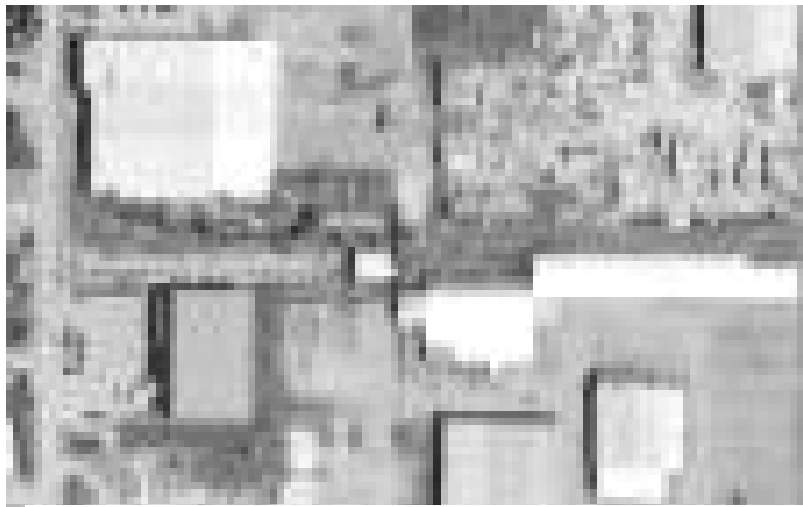


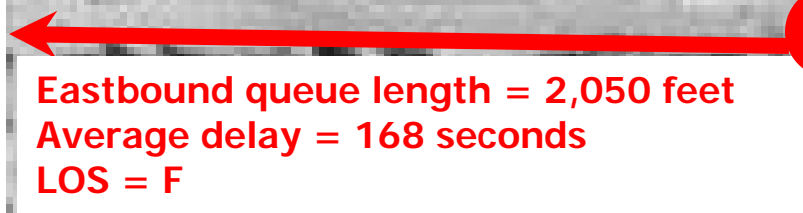
Single-lane Roundabout at Russell and South 3rd Street



Southbound queue length = 7,470 feet
Average delay = 563 seconds
LOS = F



Westbound queue length = 2,680 feet
Average delay = 332 seconds
LOS = F



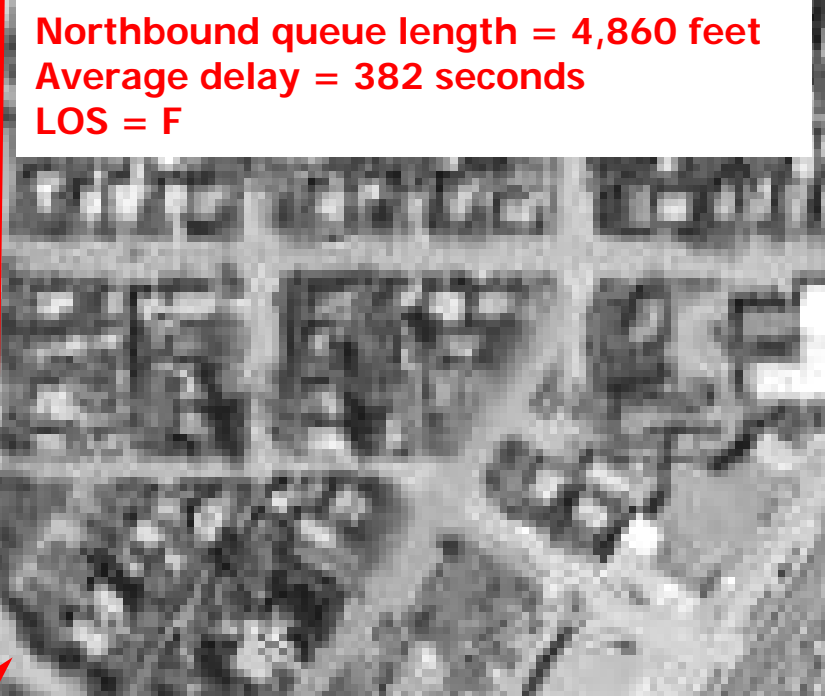
Eastbound queue length = 2,050 feet
Average delay = 168 seconds
LOS = F

Overall Intersection Operation:
Average Delay = 399 seconds
LOS = F

Travel Speed = 1.5 mph
Fuel Consumption = 251 gallons per hour



Northbound queue length = 4,860 feet
Average delay = 382 seconds
LOS = F



Multi-lane Signalized Intersection at Russell and South 3rd Street



Overall Intersection Operation:
Average Delay = 29 seconds
LOS = C

Travel Speed = 11 mph
Fuel Consumption = 57 gallons per hour

Southbound queue length = 225 feet
Average delay = 24 seconds
LOS = C

Westbound queue length = 125 feet
Average delay = 22 seconds
LOS = C

Eastbound queue length = 150 feet
Average delay = 32 seconds
LOS = C

Northbound queue length = 300 feet
Average delay = 33 seconds
LOS = C